

Welcome to Street Weekend #2!

The event that many of us have been looking forward to for the past 12 months is finally here and we're in for another weekend of fun, frolics and racing. We know you've all been eagerly awaiting the final instructions and now the final checkpoint has been announced, here they are!

Firstly, we have a very important warning:

DON'T BE THAT PERSON...

Simply, don't drive, act or conduct yourself in any manner that will bring this event into disrepute. It wouldn't take much to get this event shut down which is not what any of us want.

It only takes 1 team to act out and mess around and this event will be over.

If we get any reports of anyone driving not in accordance with all road laws and expectations, you will be disqualified immediately and banned from all future Street Weekend events.

It is YOUR RESPONSIBILITY to drive sensibly abiding by ALL the rules of the road including the speed limit. There is no benefit to arrive at the tracks or checkpoints any sooner so please drive sensibly. You'll have your chance to put your foot down on the track so please don't be tempted on the streets.

If you see anything you would like to report, whether it's someone loading up on a trailer or hooning around on the road, please let us know (preferably with evidence) by emailing streetweekend@santapod.com

Please be considerate to local residents, especially when entering and exiting the tracks, checkpoints and surrounding areas through the night and early in the morning. Please make an effort to keep your revs low and drive sensibly as to not disturb any of our neighbours. This is another item that could stop the event in its tracks so it's super important.

We want this event to continue.

Don't be that one person to spoil it for everyone and risk the future of this event.

GATE OPENING TIMES

Santa Pod Raceway:

Gates open to competitors **Thursday 13th June 2024** at **9am-10pm ONLY**

Friday 14th June from 8am onwards for the remainder of the event.

Melbourne Raceway:

Gates open to competitors **Friday 14th June** from **4pm** – There will be security on 24hrs for those that arrive late.

TRACK OPENING TIMES

Santa Pod Raceway

Both days (Friday 14th / Sunday 16th) – 9.30am – 5pm

Melbourne Raceway

Saturday 15th – 9.30am - 5pm

TICKETS

All tickets will be available to collect upon arrival from our Advance Ticket Collection Office here at Santa Pod Raceway. Each Race entry will receive 2 weekend admission tickets. 1 for the driver plus 1 for crew.

All weekend tickets will grant you access to both Santa Pod Raceway and Melbourne Raceway across the weekend.

Please ensure that you scan all tickets in and out of Santa Pod and have them available to show upon arrival at Melbourne Raceway.

PITS

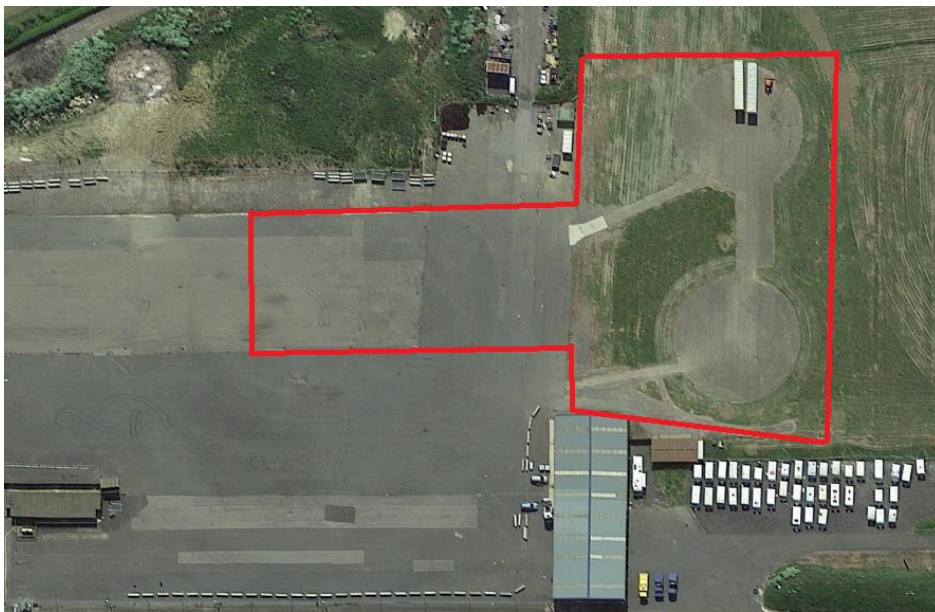
Santa Pod Raceway:

Pits will be located on both circles, (where Pro ET normally pit) as well as extending into the main pits as shown below in red.

Please pit sensibly and listen to all marshal/security information and instructions.

Racers camping in its usual location will be available, so please only have the necessary equipment within the pit itself.

Of course, you're welcome to leave pit setups here at Santa Pod whilst you travel to and from Melbourne Raceway.



Melbourne Raceway:

Pits at Melbourne will be located along the main pit straight as shown in the red box. Upon arrival to the site, you will be guided down the road into the pits, as shown by the yellow arrow.



PHOTOS

To prove that you've made each checkpoint during the event, we need to see a photo of your car as detailed in these instructions at each checkpoint. Please bear in mind that our checkpoints are businesses that are supporting the event. If they are open when you arrive and you have the time, please do pop your head in and say hello. You never know they may just be able to help you out of a tight spot and there may be some goodies on offer! With that said, we know some of you will be arriving outside of opening hours and possibly in darkness. If you arrive in darkness and it's too dark to take a photo, please take a short video (with a torch or headlights) showing your vehicle and one of the signs at each stop.

THE ROUTE

The question that has been on everyone's lips is the route. Here is what we have in store for you.

At each of the checkpoints, there will be a Santa Pod Raceway representative. They will be in high-viz jacket.

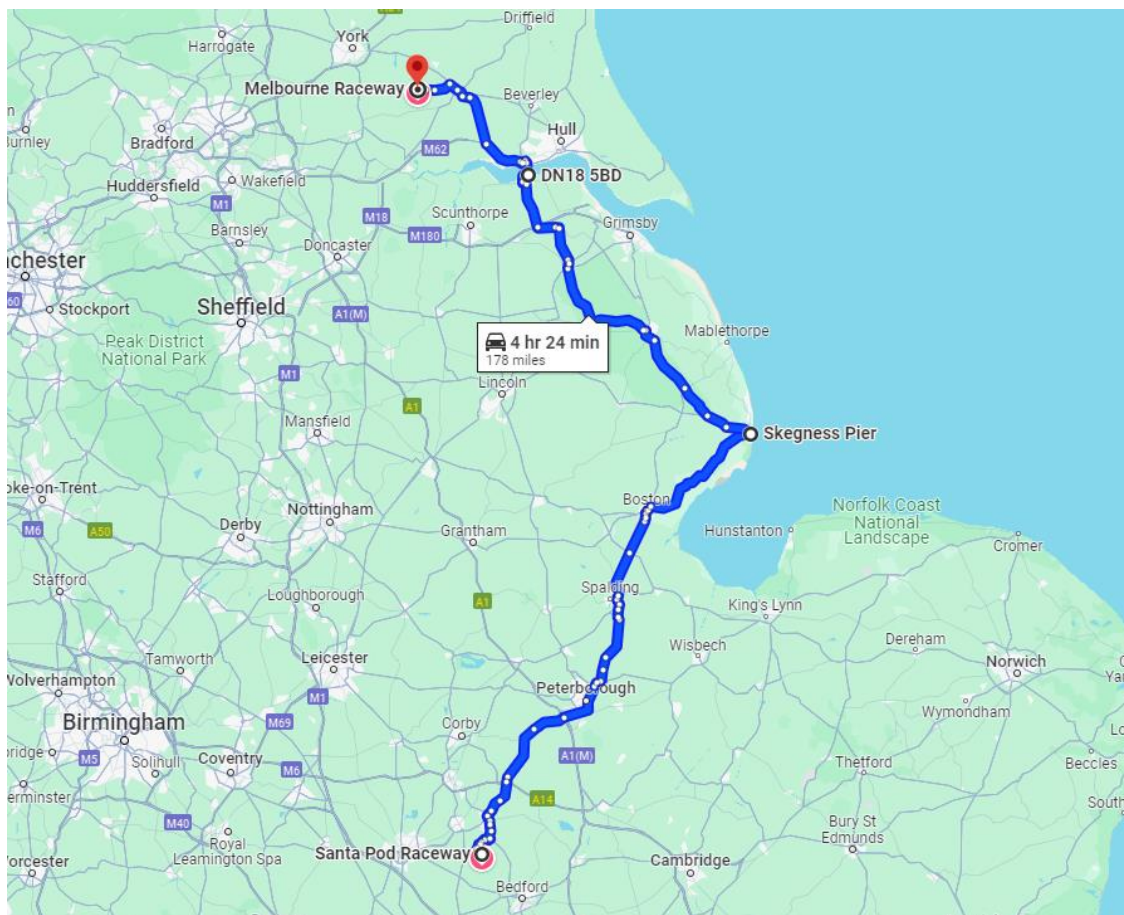
For the Santa Pod to Melbourne route, the checkpoints you must hit are as follows:

Skegness Pier – Postcode: PE25 2UE

The Viking Way Café/Bar – Postcode: DN18 5BD

And of course, **Melbourne Raceway** – Postcode: YO42 4SS

The suggested route can be found here: <https://maps.app.goo.gl/Fg5vhenZF7DWyLCu5>

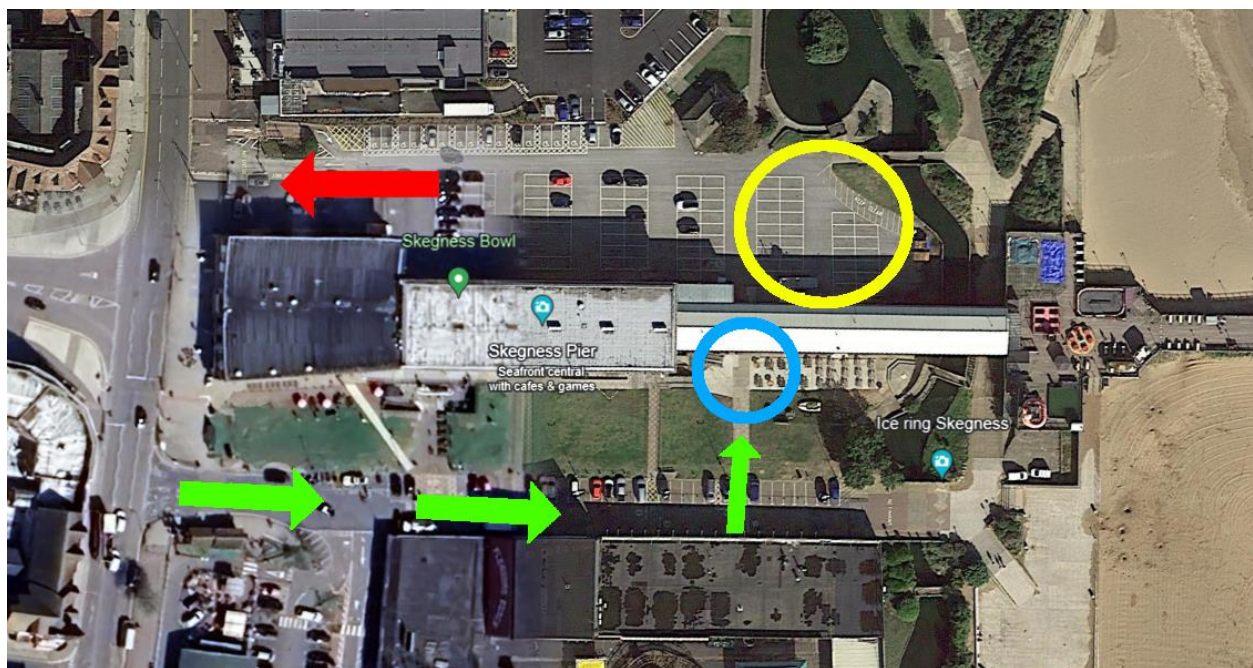


Please note that you DO NOT have to follow this route. We know that some of you may want to travel on motorways and some of you may want to avoid them. The route you take is up to you. All we stipulate is that you must hit the checkpoints listed.

CHECKPOINT 1 - Skegness Pier - PE25 2UE

Access to the Skegness Pier checkpoint photo opportunity is to the right of Skegness Pier, as shown below via the green arrows.

There are speed bumps on this route in. Should you experience difficulty with these, please access the checkpoint photo location via what is shown as the exit on the below (the reverse of what's shown).



The location for the photo is marked in blue above, just outside of the Pier Beach Bar.

Once you have taken your photo, you can proceed under the pier to access the next car park. However, should this route prove difficult for some, you can turn around and go back out the way you came in.

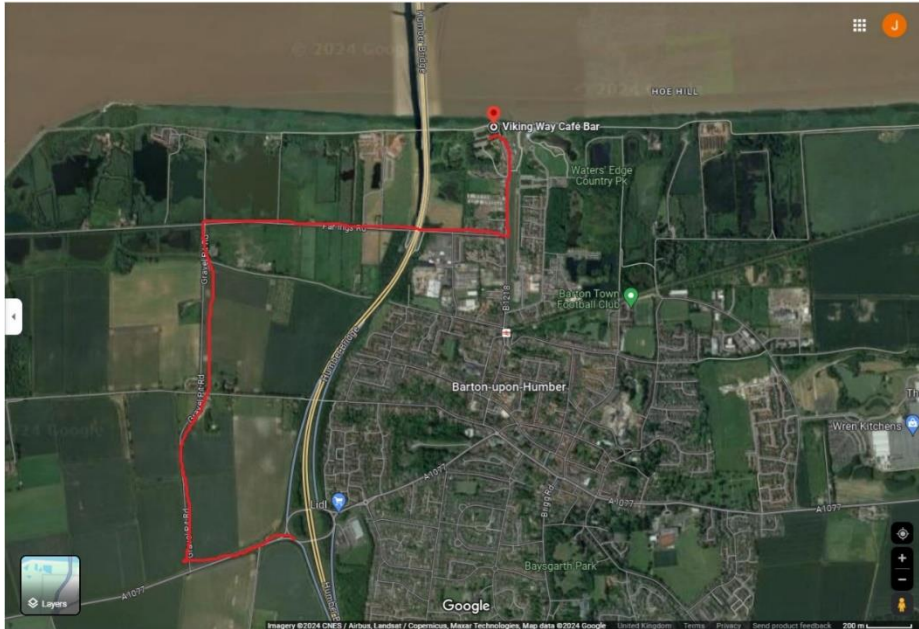
The area highlighted in yellow is generally the quieter area of the car park, however given this being a Friday, it is likely that the whole car park will be quiet.

There is plenty going on around this area with a full arcade, bowling, food and drink options and if you're passing through later on, even a band in the beach bar!

The car parks in and around the checkpoint are all pay and display so if you'd like to enjoy some time at the pier and beach, please make sure you abide by the pay and display rules of the car park.

CHECKPOINT 2 - The Viking Way Café Bar

The 2nd stop will be a public car park at the Viking Way Café Bar. We suggest that you take the route shown to get in and out of the stop, particularly if you're arriving late at night, please. Avoiding the town centre will probably be in your interest too! If you are arriving late at night, please do keep noise to a minimum as you drive through the residential area right outside of the car park.



There is a very slight speed bump on the way into the car park so we're hopeful nobody will have any issues getting over it. If you really can't get over it then please do take a photo at the entrance to the car park where the speed bump is.

The car park is spacious here, for the photo we'd love to see you and your car with the Humber Bridge in the background!

The Viking Way Café/Bar have kindly offered to stay open late for us (till 11.30pm) so please do support them by sampling their food and drinks during your pitstop.

LEAVING VIKING WAY – HUMBER BRIDGE

Please note that when leaving Viking Way, the natural and intended route is to head over the Humber Bridge. This is a toll road. If you are going to head over it and you're using a Sat Nav, make sure you don't have the "avoid tolls" button checked, or it will try and take you away from it. You can pay retrospectively but to save anyone from forgetting, we **HIGHLY RECOMMEND** that you **PAY AS YOU CROSS** and the payment is **CARD ONLY**. More information can be found at: <https://humbertag.com>

For the return Melbourne to Santa Pod route, the checkpoints you must hit are as follows:

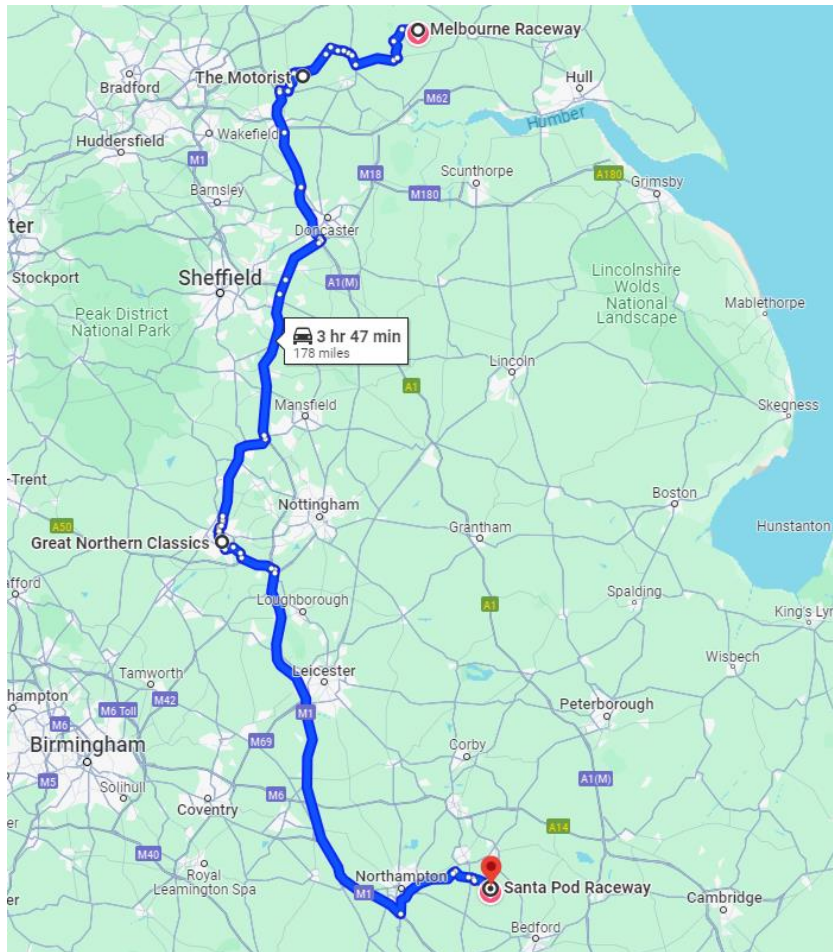
The Motorist – Postcode: LS25 6JE

Great Northern Classics – Postcode: DE24 8AE

And finally, **Santa Pod Raceway** – Postcode: NN29 7XA

Please be aware – There are roadworks southbound on the A1 just past Darrington (single lane) It doesn't take long to clear.

The suggested route can be found here: <https://maps.app.goo.gl/MJFpo88sxdtXjKdC8>



As per the first leg of the journey, it is not compulsory to follow this route, you must only hit the checkpoints.

CHECKPOINT 3 - The Motorist

Entry to The Motorist is accessed via New Lennerton Lane, just off the B1222 Bishopdyke Road.

As shown on the map below, The Motorist will appear on your right-hand side.

Access to the car park is via the 2nd entrance shown below with the green arrow.

Please listen to The Motorist marshals on the day who will show you where best to locate yourself within the car parks.

For this checkpoint, we would love to see your photos with The Motorist in the background – A photo opportunity area will be allocated for Street Weekenders. Once you've used the photo area, please remove your vehicle back into the car park, as directed by marshals.



Arrival times for this checkpoint on Saturday will be **8am** until **11pm sharp**.

Due to local residents, Street Weekenders are not allowed down to the venue post-11pm.

Therefore, in the unlikely event that you will arrive outside of the times stated, please use the following backup photo location:

BP Fuel Garage - Low St, South Milford, Leeds LS25 5AT



This garage is open 24hrs a day.



CHECKPOINT 4 - Great Northern Classics

Entry to Great Northern Classics is just off the A514.

(It's known that when using Apple Maps, entering the postcode may send you to Osmaston Park Road, instead of the correct location, Osmaston Road. Although only 5 minutes round the corner, please ensure you're going to the right location)

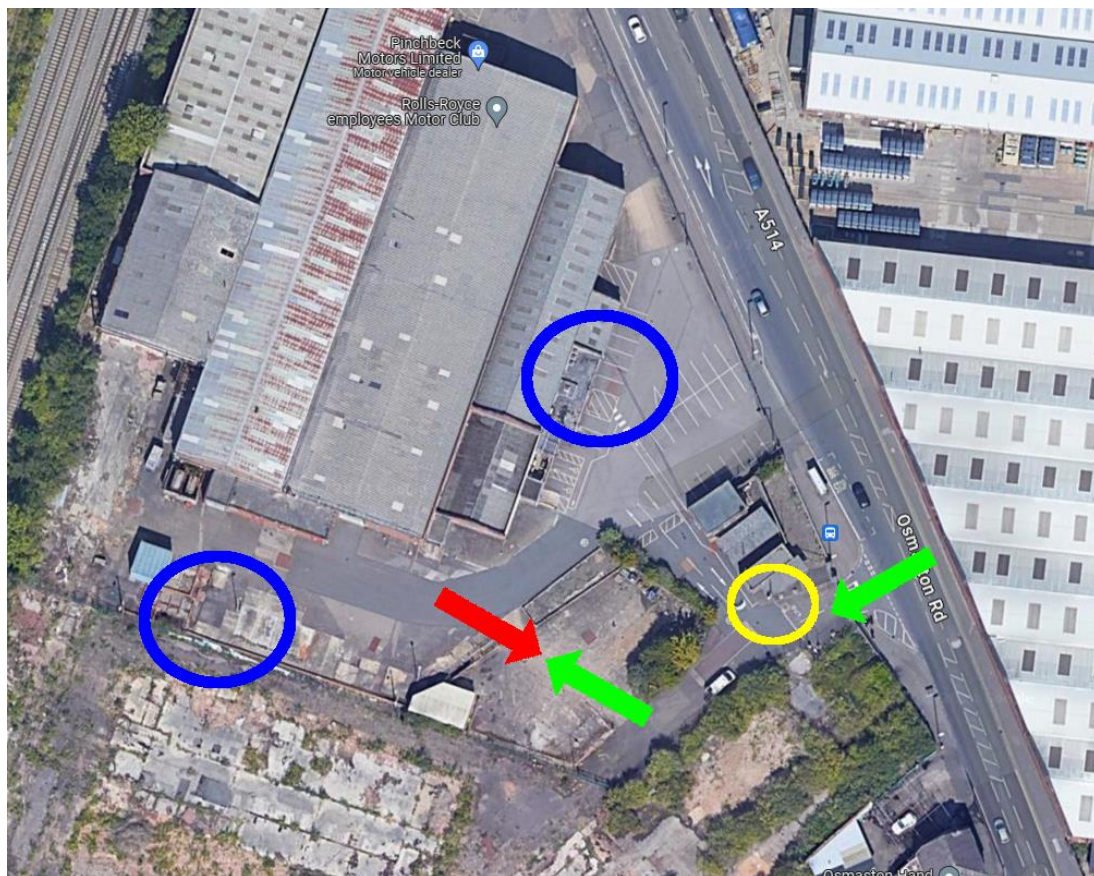
Upon turning off the road, go past the main entrance with the barriers, to the second entrance. Shown on the map in green arrows.

Upon arriving, please listen to any marshals at the venue who will show you where best to locate yourself within the car park.

As listed further below, there are two photo opportunities at this checkpoint. Both of these are circled below in blue.

Should anyone arrive outside of operating hours for this checkpoint, there is a sign outside the venue which can also be used as a photo opportunity, as shown below in yellow.

When leaving the venue, please leave via the entrance you came in, shown below in red, NOT via the main entrance/exit.



Checkpoint Photos

We have taken some sample photos at each stop as follows:

Skegness Pier:

To have the Pier Beach Bar in the background (although we'll be seeing the rear of your cars as you head through the stop)



The Viking Way Café/Bar:

To have the Humber Bridge in the background.



The Motorist:

Upon leaving the site, next to the red arrow on The Motorist map above, there is a set of garages with THE MOTORIST sign. This to be included within the photo.



Great Northern Classics

Either outside the main entrance or using their graffiti mural on the way in – Either can be used for the photo.



In the event the Great Northern Classics is closed, there is an adequate sign at the entrance to the venue as seen here:



Photo Submission

The “Street Weekend 2024” Facebook group will act as the hub for all social activity and updates during the course of the event so please get yourself signed up. This will also be the primary place to submit your checkpoint photos. We will be posting the above images from each checkpoint, pinning them to the top of the group and we would like you to leave your own submissions in the comments of each relevant photo. <https://www.facebook.com/groups/1290183921826204>

If you are not on Facebook, you can also submit your photos by email to:
streetweekend@santapod.com.

All checkpoint submissions must be received by the end of the event to allow us to determine the results. It is your responsibility to submit your photos, we cannot chase you all for them!

There is one other KEY INSTRUCTION regarding photos that will be revealed on the Friday of the event that you MUST follow to complete the stops at each checkpoint.

Race Numbers

We need everyone to run a race number at each track.

Where possible, we have left people with their “requested race numbers”.

Please check the website for your allocated entry number: <https://santapod.co.uk/street-weekend.php>
Writing these on your rear windscreen with shoe whitener is sufficient but we strongly advise that this is removed for driving between tracks to save any unwanted attention!

Santa Pod – Please ensure your numbers are visible from the tower as normal. Primarily on the rear on the vehicle and possibly on the left side of the vehicle

Melbourne Raceway - Please ensure your numbers are clearly visible on the right hand side of the vehicle.

Start Lights

Both tracks will be running on a PRO tree.

Signing On

Santa Pod Raceway (Friday & Sunday)

Signing on will take place in the Media Centre. Please ensure that you bring along your driving licence.

Please try to keep your wristbands on between the Friday and Sunday. For those that lose their bands, you will need to go back to Media Centre on Sunday to get a new band.

Melbourne Raceway (Saturday)

Signing on will take place at the location shown below near the start line. Please ensure that you take your licence with you.



Scrutineering (Melbourne Only)

As part of Melbourne Raceways operating procedures, each car must be scrutineered prior to taking to the track. The scrutineers will come round and have a brief look over each car in the pits. Stickers will be issued when a car has been checked.

Power

At present, power is NOT included with any Street Weekend Entries. Therefore, we advise that you bring sufficient power supply for yourself.

Also note, power is not available at Melbourne Raceway.

Timing Ticket Submission

Santa Pod Raceway (Friday & Sunday)

Please submit your timing tickets to the Media Centre

Melbourne Raceway (Saturday)

Please submit your timing tickets to Liam or Sam in SPRC shirts.

They will be located at or around the signing on office.

Footage Submission

Whilst you are on the road, please do ensure that you take some footage of your weekend! We will be asking again for you to submit footage to our production team so that it may be included in the Street Weekend Movie.

As part of this, please film anything of interest. In car footage, rolling shots of each other, yourself at the checkpoints, if you happen across anyone in need, if you're at the side of the road working on your car... anything of interest, please film and submit!

Whilst on the road, you may see either the Santa Pod marked Skoda estate or a vehicle labelled as Box Lane. These may be getting rolling shots of you on the road – If you see either of these vehicles filming you, please could to try to record an in car video of around 10-20 second duration purely of engine noise. We would like to use this in the final edit.

In an ideal world, please film at the highest resolution and frame rate possible in landscape mode – Most phones are capable of some decent videos now.

Please WeTransfer your footage to the following address: streetweekend@santapod.com

Rain Off/Penalties

If the track at either venue is open for less than 3 hours on each day due to rain, that day will be declared a rain off with all times being void, unless each entry has made at least 1 run.

Should anyone fail to put in a run outside of these circumstances or fail to submit a timing slip before the deadline, the following penalties will apply:

Santa Pod Raceway – 30 second time penalty added to that day

Melbourne Raceway – 15 second time penalty added to that day

NEW FOR 2024/2025!

After the overwhelming demand and instant sellout of entries to the 2024 event, entries to the 2025 event will be by application only. Entries will NOT be opened on a first come, first served basis.

However, you do have the opportunity to qualify for a spot in the 2025 event automatically based on your finishing position this year. The top 50 finishers of Street Weekend 2024 will all have a spot allocated in the 2025 event should you want it. These will be for the finishing driver only and will be non-transferable.

TROPHY PRESENTATIONS

Trophy presentations will take place on the startline 30 minutes after track closes so please do come along and find out who's won each category and support each other.

Additional Notes

Please note that it is your responsibility to plan for fuel stops and fuel station opening times. We don't know how big your fuel tanks are and what your driving range is so please bear this in mind when planning your route.

We would like to take this opportunity to urge you to look out for one another. This will be a challenging, gruelling route and we are sure that some vehicles simply will not make it. Stories from the similar events on the other side of the pond always revolve around the camaraderie and togetherness of the competitors. If you see someone struggling or an entry with the bonnet up at the side of the road, please do see if you can help. The last thing we want to see is anyone stranded in the middle of nowhere.

Please also refresh your memories with the event & track rules which can be found at: <https://santapod.co.uk/street-weekend.php>. Unless you're withdrawing from the event, don't even think about putting your car on a trailer between tracks as we will find out!