

## Welcome to Street Weekend #4!

It's Street Weekend 4! And for the first time in 2026, we're running over 4 days which means more racing, more miles and more tracks with the very welcome addition of Elvington.

The checkpoints are all confirmed, the tracks are awaiting your arrival and there's a secret item ready for you to collect, here are your final instructions for the event:

**Firstly, we have a very important warning:**

### **DON'T BE THAT PERSON...**

Simply, don't drive, act or conduct yourself in any manner that will bring this event into disrepute. It wouldn't take much to get this event shut down which is not what any of us want.

It only takes 1 team to act out and mess around and this event will be over for everybody.

If we get any reports of anyone driving not in accordance with all road laws and expectations, you will be disqualified immediately and banned from all future Street Weekend events. Previous offenders have already been refused entry from this year's event.

It is **YOUR RESPONSIBILITY** to drive sensibly abiding by **ALL** the rules of the road including the speed limit. There is no benefit to arrive at the tracks or checkpoints any sooner so please drive sensibly. You'll have your chance to put your foot down on the track so please don't be tempted on the streets. We must also stress that behaviour around each venue is just as important as the roads – burnouts and speeding is prohibited anywhere but the track.

If you see anything you would like to report, whether it's someone loading up on a trailer or hooning around on the road, please let us know (preferably with evidence) by emailing **streetweekend@santapod.com**

Please be considerate to local residents, especially when entering and exiting the tracks, checkpoints and surrounding areas through the night and early in the morning. Please make an effort to keep your revs low and drive sensibly as to not disturb any of our neighbours. This is another item that could stop the event in its tracks so it's super important.

We want this event to continue for years to come.

You never know where we are, where we have eyes and who may be watching.

Don't be that one person to spoil it for everyone and risk the future of this event.

## **GATE OPENING TIMES**

### **Santa Pod Raceway:**

Gates open to competitors **Wednesday 3<sup>rd</sup> June 2026** between **12pm-10pm ONLY**.  
Then, **Thursday 4<sup>th</sup> June** from **8am** onwards for the remainder of the event.

### **Elvington Airfield:**

Gates open to competitors **Thursday 4<sup>th</sup> June** from **5pm** – There will be security on 24hrs for those that arrive late.

### **Melbourne Raceway:**

Gates open to competitors **Friday 5<sup>th</sup> June** from **5pm** – There will be security on 24hrs for those that arrive late.

## **TRACK OPENING TIMES**

### **Santa Pod Raceway**

Both days (Thursday 4<sup>th</sup> June / Sunday 7<sup>th</sup>) – 9.30am – 5pm

### **Elvington Airfield**

Friday 5<sup>th</sup> June - 9.30am – mid afternoon

### **Melbourne Raceway**

Saturday 6<sup>th</sup> June – 9.30am - 5pm

## **TICKETS**

All tickets will be available to collect upon arrival from our Advance Ticket Collection Office at Santa Pod Raceway. Each Race entry will receive 2 weekend admission tickets. 1 for the driver plus 1 for crew. Additional tickets can be purchased if required.

All weekend tickets will grant you access to Santa Pod Raceway, Elvington and Melbourne Raceway across the weekend.

Please ensure that you scan all tickets in and out of Santa Pod and have them available to show upon arrival at Melbourne and Elvington.

## **PITS**

### **Santa Pod Raceway:**

Pits will be located in the usual “bike pits” and the area between the grandstand and café in the areas shown below.

Please pit sensibly and listen to all marshal/security information and instructions.

Of course, you’re welcome to leave pit setups here at Santa Pod whilst you travel to and from the other tracks but this will be at your own risk!



**Elvington Airfield:**

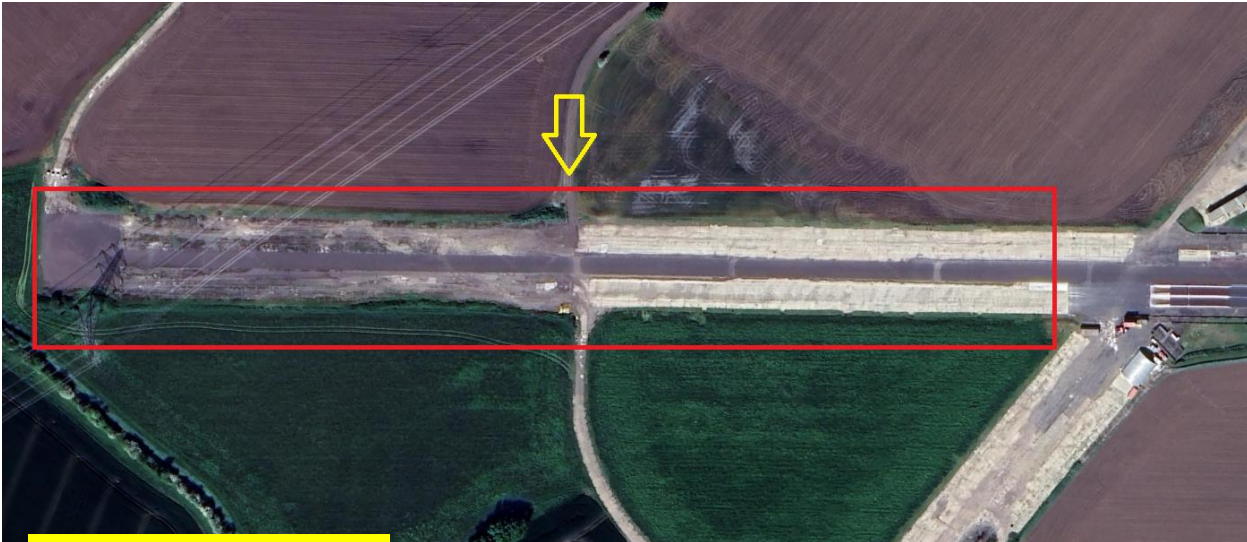
Pits at Elvington will be on the main concrete area shown on the map in RED.

Access to the site will be via Halifax Way, junction off the B1228, signposted Air Museum shown in the Street View below and circled in Green on the map. You will follow the yellow line round to the pitting area.



## Melbourne Raceway:

Pits at Melbourne will be located along the main pit straight as shown in the red box. Upon arrival to the site, you will be guided down the road into the pits, as shown by the yellow arrow.



## **MELBOURNE RACEWAY**

**PLEASE NOTE:** Racers will be required to make a minimum of **two** runs at Melbourne Raceway on the Saturday of the event.

Friday evening they have a "Street food" stall and the usual catering facilities and bar open, they also have a band playing in the club House from 8.00pm till late.

The pits will be flood lit during the evening on Friday.

They are aiming to have the track open around 9.30 am and will run right through until around 5.30 pm

1. There is a minimum of 2 runs required and the fastest run will count towards the total on submission of your timing tickets
2. There is a £500.00 cash prize for the best reaction time on Saturday for the Street weekend entrants, but 2 runs must be taken to qualify, if the best reaction time is on the first run and a subsequent second run is completed then the first run will count towards this award.
3. If only one run is completed then this will not count towards quickest reaction time award nor the Street Weekend competition.
4. The management reserve the right to alter the minimum runs from 2 to 1 in the event of adverse weather conditions or other circumstances. If this happens then all runs will count.
5. A valid timing ticket is confirmation of a completed run.

Cars will return around the return road leading back to the top of the pits as in previous years to reduce congestion. This means you will turn **RIGHT** at the end of the track, not the usual left.

## **ELVINGTON AIRFIELD**

The main drag strip for Elvington is highlighted in green on the map below.

When you have finished your run, you will turn **RIGHT** as shown by the orange line, leading you back round to the pitting area. Should you miss the first turn off, you will need to go long down to the next right hand turn.

Please ensure you listen to the drivers briefing about this in the morning.

On the return, please do **NOT** use this as an extra drag strip. Please keep speed low on your return. We don't want people racing down the runway. Anyone caught misbehaving will be ejected from the event.



## **PHOTOS**

To prove that you've made each checkpoint during the event, we need to see a photo of your car as detailed in these instructions at each checkpoint. Please bear in mind that our checkpoints are businesses that are supporting the event. If they are open when you arrive and you have the time, please do pop your head in and say hello and support them. With that said, we know some of you will be arriving outside of opening hours and possibly in darkness. If you arrive in darkness and it's too dark to take a photo, please take a short video (with a torch or headlights) showing your vehicle and one of the signs at each stop.

## THE ROUTE

Please note that you MUST visit each of the checkpoints on your journeys. At each of the checkpoints, there will be at least one Santa Pod Raceway representative during peak times.

**For the Santa Pod to Elvington route, the checkpoints you must hit are as follows:**

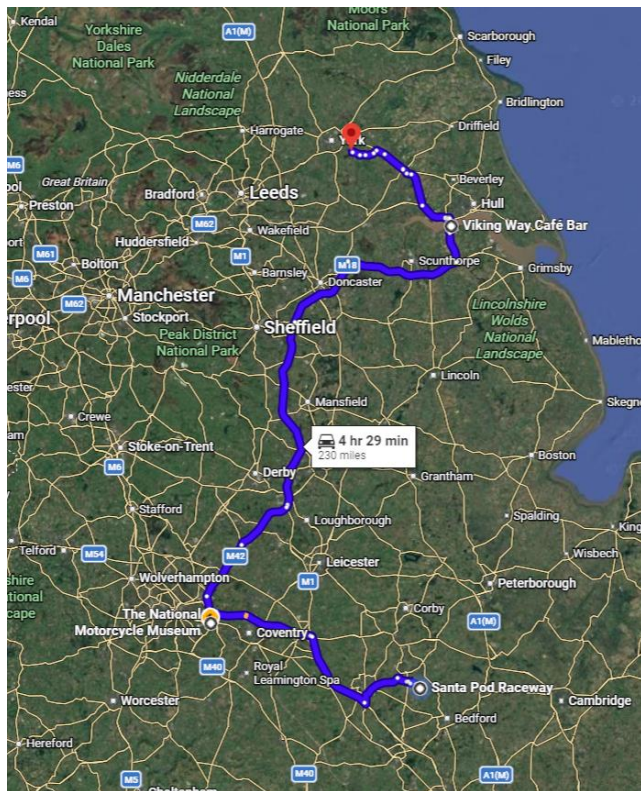
**National Motorcycle Museum – Postcode: B92 0EJ**

**The Viking Cafe – Humber Bridge – Postcode: DN18 5BD**

And of course, **Elvington Airfield – Postcode: YO41 4AU**

The suggested route can be found here: <https://shorturl.at/h2qgw>

Note that this route includes Toll Road over the Humber Bridge.



Please note that you DO NOT have to follow this route. We know that some of you may want to travel on motorways and some of you may want to avoid them. The route you take is up to you. All we stipulate is that you must hit the checkpoints listed.

## **CHECKPOINT 1 – National Motorcycle Museum – Postcode: B92 0EJ**

The 1<sup>st</sup> stop will be at the National Motorcycle Museum. The entrance is signposted well leading up to the venue. Access is just off the main roundabout of the M42/A45.

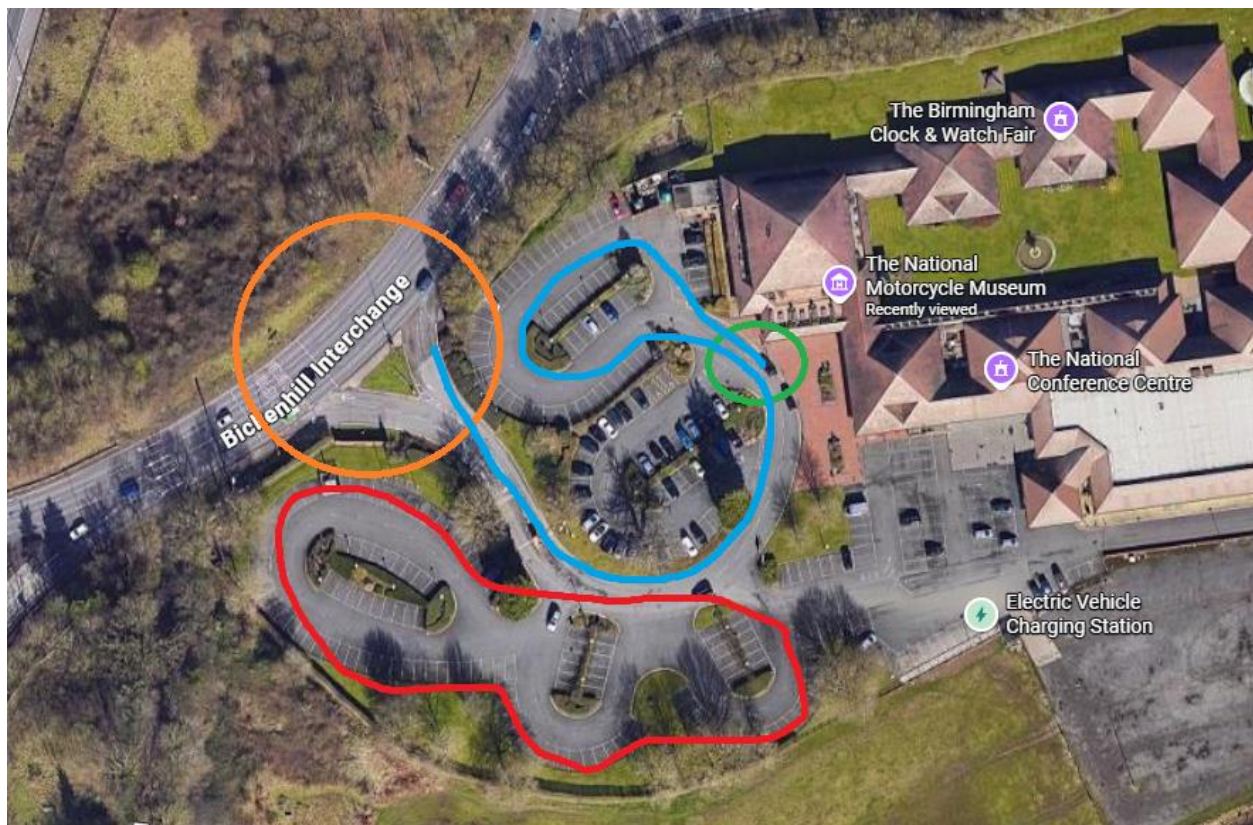
The venue has kindly given our competitors a **50%** discount to Street Weekenders. Last entry to the museum is 4.30pm for a 5.30pm close.

The café is open 08.30am until 5.30pm. There are also toilets within the venue.

The car park doesn't close, so the car park can still be accessed outside of closing hours for those late comers.

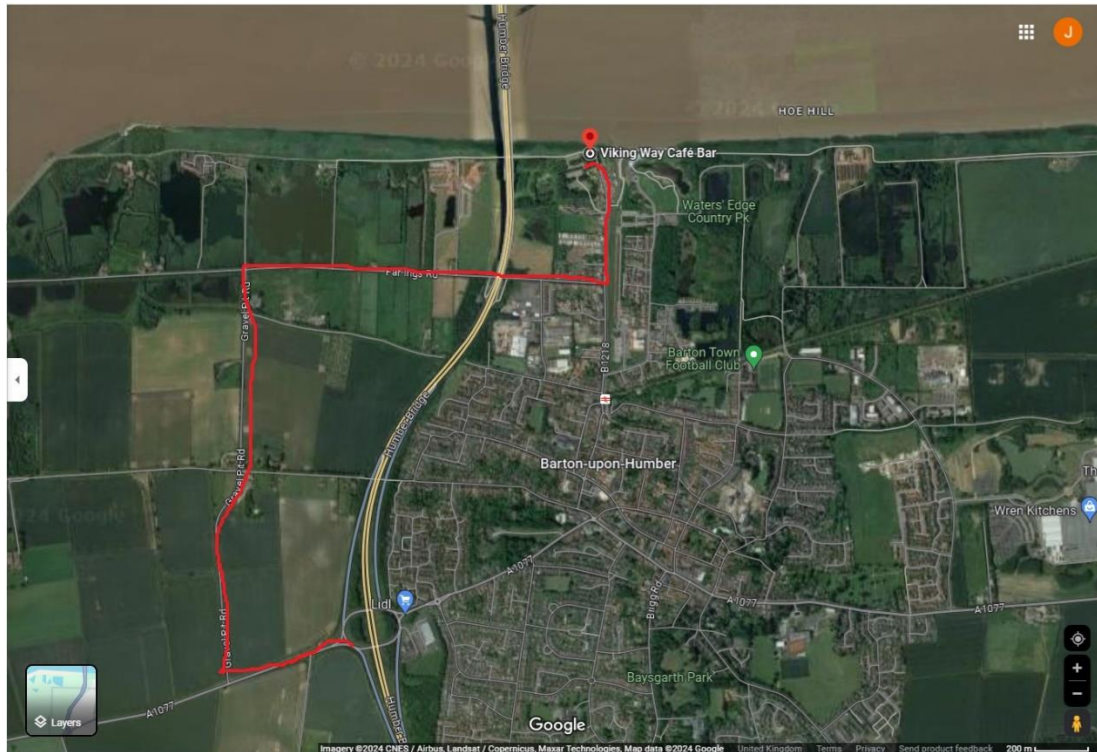
The entrance/exit to the venue is marked in orange.

Upon arrival, you'll follow the blue line round, looping back to outside the main entrance for your checkpoint photo shown in green. When you're finished carry on to park up anywhere in the car park show in red.



## **CHECKPOINT 2 – The Viking Cafe – Humber Bridge – Postcode: DN18 5BD**

The 2<sup>nd</sup> stop will be a public car park at the Viking Way Café Bar. We suggest that you take the route shown to get in and out of the stop, particularly if you're arriving late at night, please. Avoiding the town centre will probably be in your interest too! If you are arriving late at night, please do keep noise to a minimum as you drive through the residential area right outside of the car park.



There is a very slight speed bump on the way into the car park so we're hopeful nobody will have any issues getting over it. If you really can't get over it then please do take a photo at the entrance to the car park where the speed bump is.

The car park is spacious here, for the photo we'd love to see you, your car, and your item with the Humber Bridge in the background!

The Viking Way Café/Bar have kindly offered to stay open late for us, so please do support them by sampling their food and drinks during your pitstop.

## **LEAVING VIKING WAY – HUMBER BRIDGE**

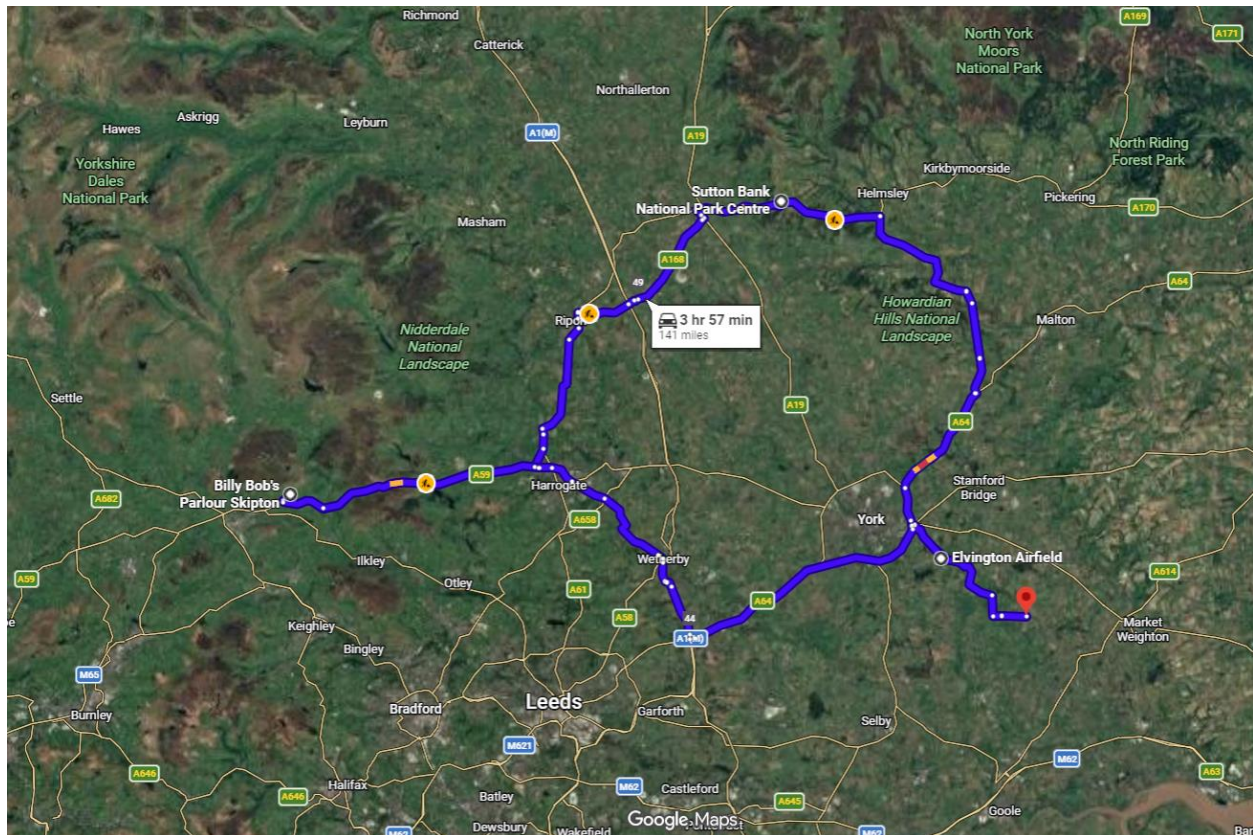
Please note that when leaving Viking Way, the natural and intended route is to head over the Humber Bridge. This is a toll road. If you are going to head over it and you're using a Sat Nav, make sure you don't have the "avoid tolls" button checked or it will try and take you away from it. The toll itself is £2 to cross. There is no longer the option to pay as you cross so PLEASE DO NOT FORGET TO PAY YOUR TOLL! You can do this after your journey here: <https://toll.humberbridge.co.uk/guest-crossings> You have until Midnight, the day after your journey to pay.

**For the journey from Elvington Airfield to Melbourne Raceway, the checkpoints you must hit are as follows:**

**Sutton Bank Visitor Centre** – Postcode: YO7 2EH

**Billy Bobs Parlour** – Skipton – Postcode: BD23 6EU

And finally, **Melbourne Raceway** – Postcode: YO42 4SS



The suggested route can be found here: <https://shorturl.at/gBAU4>

As per the first leg of the journey, it is not compulsory to follow this route, you must only hit the checkpoints.

### **CHECKPOINT 3 – Sutton Bank Visitor Centre**

The first checkpoint of the day is Sutton Bank Visitor Centre.

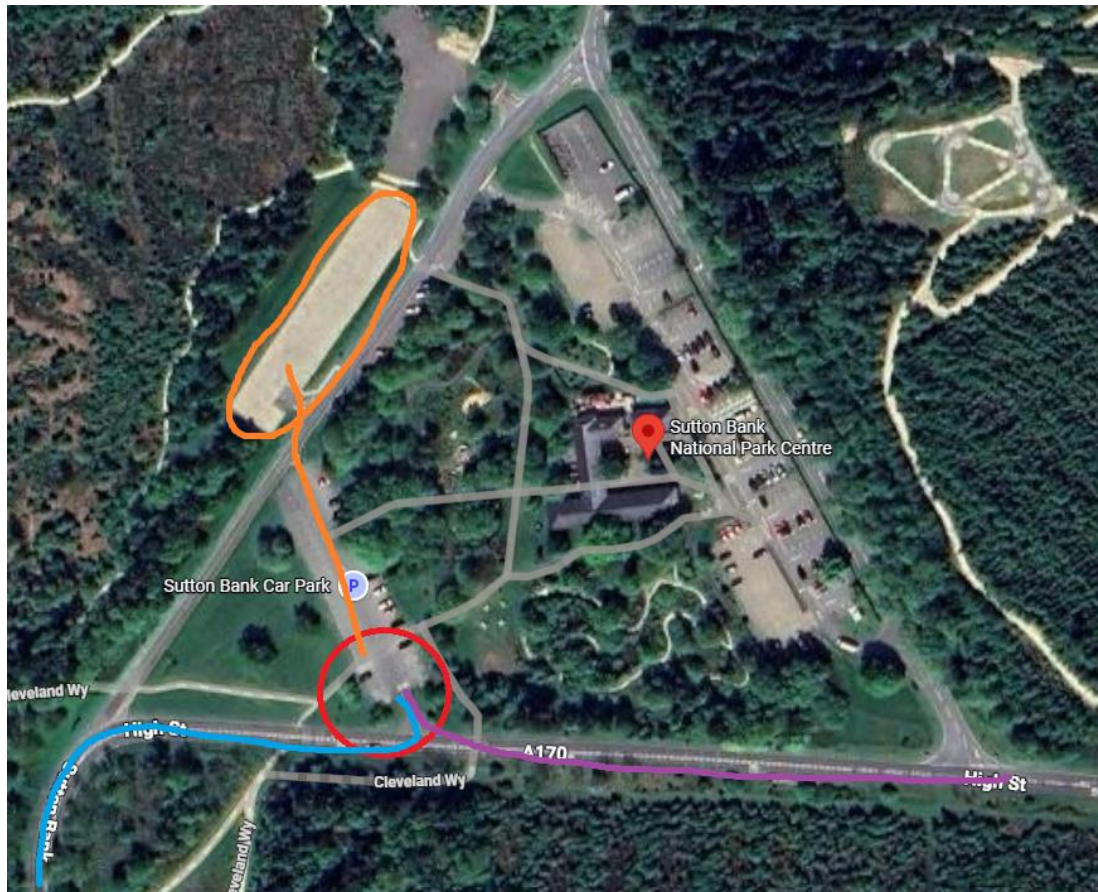
Access to Sutton Bank Visitor Centre will be via the A170.

If you are coming in from the West via Sutton-Under-Whitestonecliffe using Sutton Road/A170 shown by the blue line on the map, there is a **25%** incline on the road and some tight turns. Think carefully about going up this route or down this route. It can be quite heavy on the brakes going down and hard on the gears going up. Please be smart here.

You can also access this checkpoint by coming in from the East via the village of Sproxtun or Helmsley using Cote Lane/High Street, shown by the purple line below.

Upon arrival, you will either turn left or right, either way, it will be the 2<sup>nd</sup> turning into the area shown below in red. This is where you'll get your checkpoint photo as soon as you pull in. Once this has been taken, follow the orange line over to your designated car park circled in orange below. You do NOT need to pay parking in this car park. If you park in any other car park on site, you will need to pay for parking.

The venue has kindly offered a 10% discount in the shop for Street Weekenders.



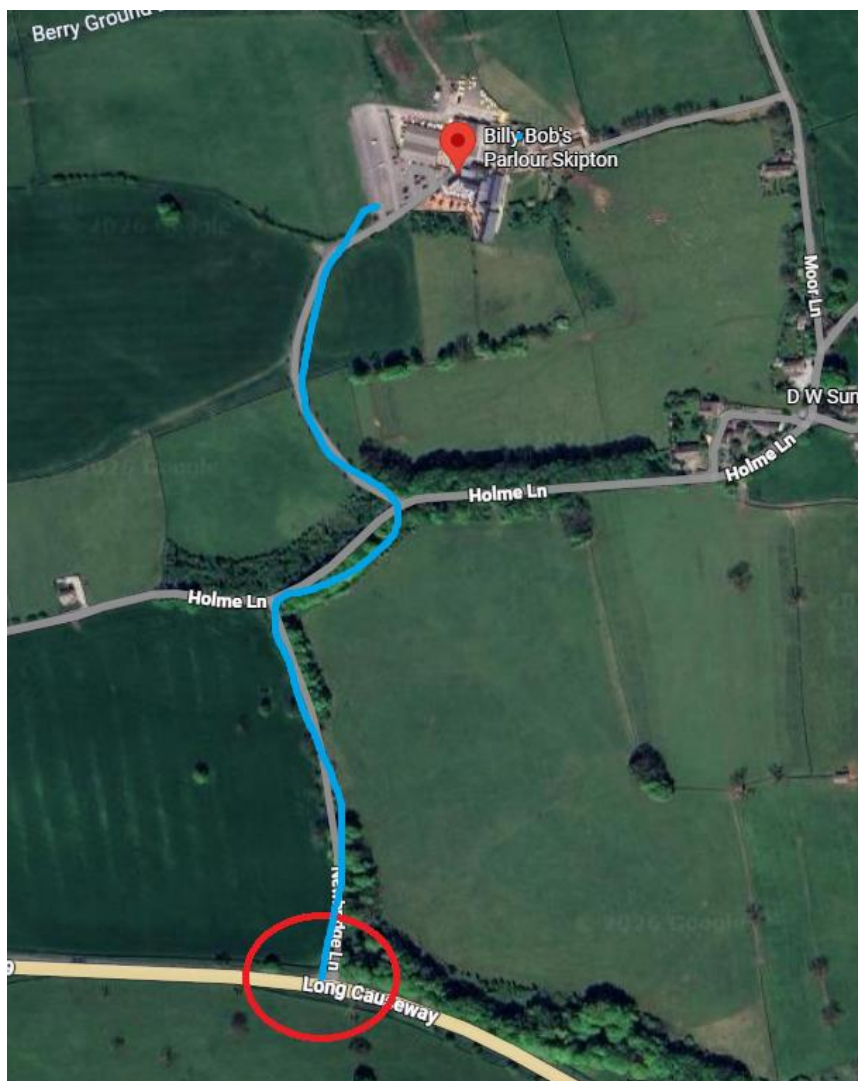
## **CHECKPOINT 4 – BILLY BOB’S PARLOUR - BD23 6EU**

The 2<sup>nd</sup> checkpoint of the day is Billy Bob’s Parlour.

The approach roads to the venue are a little tight so please be considerate to other competitors and other road users as you head in and out of the venue.

Access is via Newbridge Lane, just off the A59 Long Causeway shown in red on the map. Follow the blue line up to Billy Bobs.

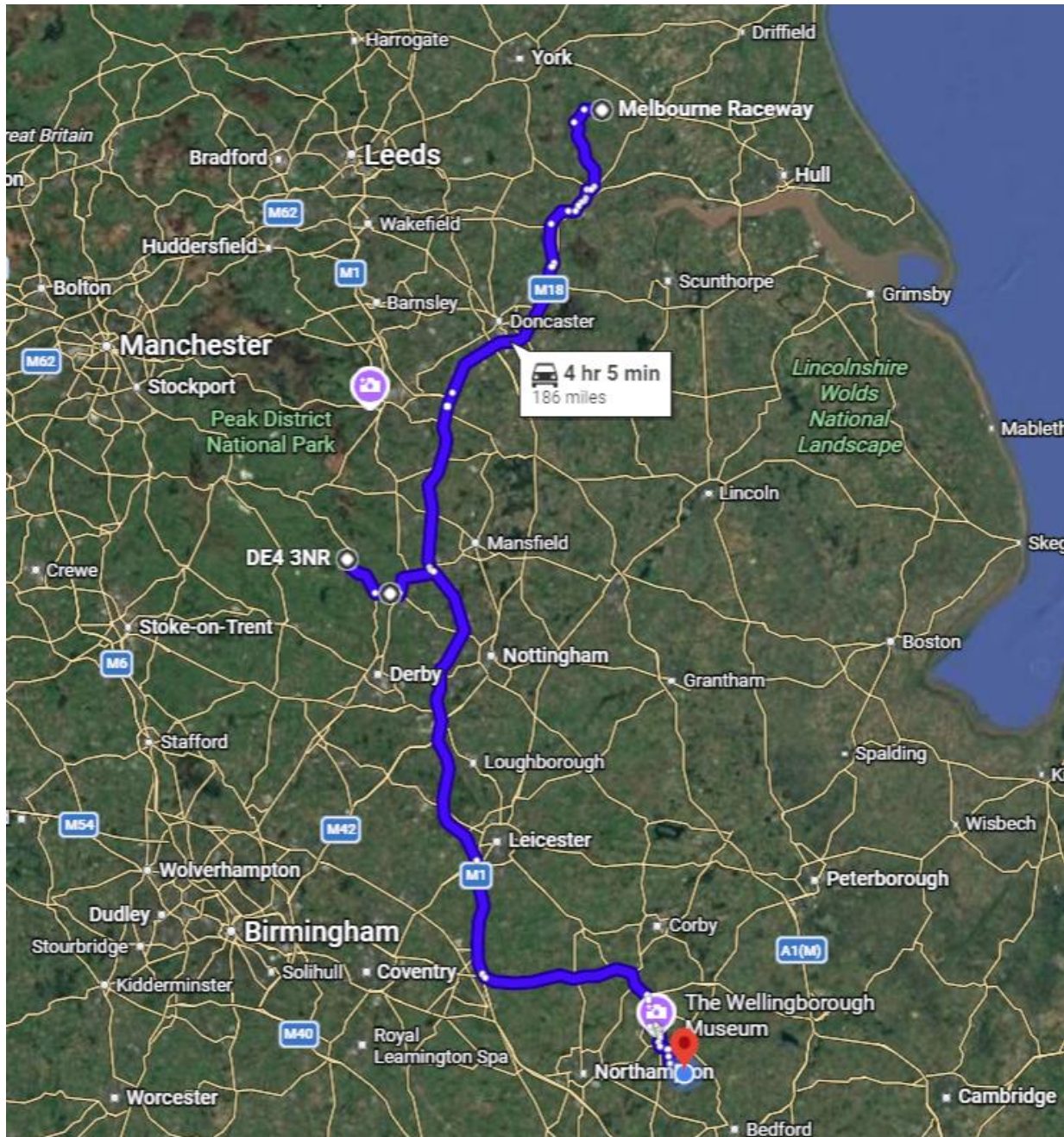
Once inside, there is a spacious car park with a stunning backdrop. We’ll be putting out some of our Corteco banners so we’d like to see your submission photos in front of one of those please. The venue is open until 6pm. If you arrive after that, please take your photo at the gate to the car park. (Looking at the menu, you’re going to want to arrive whilst you can sample the menu!)



And finally, from Melbourne Raceway to Santa Pod Raceway, the single checkpoint you must visit is:

Matlock Bath – Temple Walk Car Park – Postcode: DE4 3NR

And finally, Santa Pod Raceway – Postcode: NN29 7XA



The suggested route can be found here: <https://shorturl.at/4TFim>

As per the rest of the journey, it is not compulsory to follow this route, you must only hit the checkpoints.

## **CHECKPOINT 5 – Temple Walk Car Park – Matlock Bath - DE4 3NR**

Enjoy a visit to the picturesque village of Matlock Bath. Famously known as a “go to” destination for motorcyclists, this is a seaside resort, without the seaside! Almost underneath the car park, you’ll find the Grand Pavilion set on the river with a café & coffee shop. These guys have been instrumental in getting us permission to visit the area so please do support them if you need some refreshments during your visit. There are steps down into Matlock Bath just outside of the car park.

We have a cordoned off area in the pay and display car park that you **DO NOT** need to pay for. If you park outside of this, you will need to pay & display - we have been warned that wardens are likely to be on patrol.

**PLEASE NOTE** that despite coming from the North, it is strongly advisable that you come into Matlock Bath from junction 28 of the M1 (following the above suggested route). Matlock and Matlock Bath can both get extremely busy at weekends and our designated car park is on the South side of Matlock Bath. As well as avoiding traffic, this helps with the turn into the car park. If you were to arrive from the North, it would be a pretty nasty U-turn to get into the car park – when arriving from the South side, you drive straight in!

As in the instructions above, it is advised that you come in to Matlock Bath from the South side off Junction 28 of the M1.

Approaching from this side, you will be on DERBY ROAD A6.

As shown on the map below circled in RED, you will see an up hill junction with a Gullivers Kingdom sign.

This is **TEMPLE ROAD** with a postcode **DE4 3PG** – This postcode will take you up Temple Road which is where you want to be.

You will need to go up this road show in orange on the map and turn into the car park. One of our marshals will be on that turn into the car park.

Once parked up in the car park, you can walk down some steps to get to Matlock Bath with the shops, river front etc...



## **Checkpoint Photos**

Examples of the photos we want to see at each checkpoint will be published on the Street Weekend Facebook Group ahead of the event but we will also have marshals at each checkpoint during peak periods to advise.

## **Photo Submission**

The “Street Weekend 2026” Facebook group will act as the hub for all social activity and updates during the event, so please get yourself signed up. This will also be the primary place to submit your checkpoint photos. We will be posting images from each checkpoint, pinning them to the top of the group and we would like you to leave your own submissions in the comments of each relevant photo.

<https://www.facebook.com/groups/1290183921826204>

If you are not on Facebook, you can also submit your photos by email to:  
[streetweekend@santapod.com](mailto:streetweekend@santapod.com).

All checkpoint submissions must be received by the end of the event to allow us to determine the results. It is your responsibility to submit your photos, we cannot chase you all for them!

**There is one other KEY INSTRUCTION regarding photos that will be revealed on the Thursday of the event that you MUST follow to complete the stops at each checkpoint.**

## **Race Numbers**

We need everyone to run a race number at each track.

Where possible, we have left people with their “requested race numbers”.

Please check the website for your allocated entry number: <https://santapod.co.uk/street-weekend.php>  
Writing these on your windows with shoe whitener is sufficient but we strongly advise that this is removed for driving between tracks to save any unwanted attention!

**To ensure your race number can be seen at all 3 of the tracks, please make your number visible on the left, rear and right hand sides of your vehicle!**

## **Signing On**

**Santa Pod Raceway (Thursday & Sunday)**

Signing on will take place in the Media Centre. Please ensure that you bring along your driving licence.

Please try to keep your wristbands on between the Friday and Sunday. New wristbands can be issued on the day if they don't make the trip so don't worry too much...

### **Elvington (Friday)**

Signing on will take place in the grey cabin located in the pitting area. Please ensure that you take your licence with you.

### **Melbourne Raceway (Saturday)**

Signing on will take place at the location shown below near the start line in the usual cabin. Please ensure that you take your licence with you.

### **Scrutineering (Melbourne/Elvington Only)**

As part of Melbourne/Elvington operating procedures, each car must be scrutineered prior to taking to the track.

The scrutineers at Melbourne will come round and have a brief look over each car in the pits/pairing lanes. Stickers will be issued when a car has been checked.

At Elvington, they will scrutineer in the pairing lanes.

### **Start Lights**

All tracks will be running on a PRO tree.

### **Power**

Power is NOT included with any Street Weekend Entries at any track. Therefore, we advise that you bring sufficient power supply for yourself.

## **Timing Ticket Submission**

### **Santa Pod Raceway (Thursday & Sunday)**

Please submit your timing tickets to the Media Centre

### **Elvington (Friday)**

Please submit your quickest timing ticket to Liam and Sam in signing on office.

### **Melbourne Raceway (Saturday)**

Please submit your quickest timing ticket to Liam and Sam in signing on office.

## **Footage Submission**

We are not producing the annual movie this year.

Therefore, we encourage you all to produce your own and share anything you capture across social media platforms! The Official Facebook group is a great place to share content and is usually a hive of activity throughout the weekend.

## **Rain Off/Penalties**

If the track at either venue is open for less than 3 hours on each day due to rain, that day will be declared a rain off with all times being void, unless each entry has made at least 1 run.

Should anyone fail to put in a run outside of these circumstances or fail to submit a timing slip before the deadline, the following penalties will apply:

**Santa Pod Raceway** – 30 second time penalty added to that day

**Melbourne Raceway & Elvington Airfield** – 15 second time penalty added to that day

## **BACK FOR 2027!**

After another year of overwhelming demand we will be starting entries for 2027 in the same way as 2025 & 2026. Entries will NOT be opened on a first come, first served basis.

However, you do have the opportunity to qualify for a spot in the 2026 event automatically based on your finishing position this year. The top 50 finishers of Street Weekend 2026 will all have a spot allocated in the 2025 event should you want it. These will be for the finishing driver only and will be non-transferable.

## **TROPHY PRESENTATIONS**

Trophy presentations will take place on the startline 30 minutes after track closes on Sunday so please do come along and find out who's won each category and support each other.

## **Additional Notes**

Please note that it is your responsibility to plan for fuel stops and fuel station opening times. We don't know how big your fuel tanks are and what your driving range is so please bear this in mind when planning your route.

We would like to take this opportunity to urge you to look out for one another. This will be a challenging, gruelling route and we are sure that some vehicles simply will not make it. Stories from the similar events on the other side of the pond always revolve around the camaraderie and togetherness of the competitors. If you see someone struggling or an entry with the bonnet up at the side of the road, please do see if you can help. The last thing we want to see is anyone stranded in the middle of nowhere.

Please also refresh your memories with the event & track rules which can be found at: <https://santapod.co.uk/street-weekend.php>. Unless you're withdrawing from the event, don't even think about putting your car on a trailer between tracks as we will find out!

It is highly advised that all competitors carry their own fire extinguisher within the race vehicle, as well as additional within any support vehicles.

## **CLASSES/SPOT PRIZES**

We have the following spot prizes up for grabs across the weekend:

- Quickest Reaction Time At Melbourne (Two Runs required, one reaction time counts)
- Quickest Turbo
- Quickest Diesel
- Fastest H Pattern
- Spirit Of Street Weekend (This is voted for by the racers on Sunday of the event)
- Coolest Award (This is voted for by the racers on Sunday of the event)
- Quickest Japanese Powered Vehicle
- Most Creative Photo (With your secret item)

At the time of signing on at Santa Pod on the first day, you will be asked what categories above, if anyone, you fit into.

Voting forms for Spirit and Creative Photo will be available from signing on Sunday.

## **MEDICAL SUPPORT - Closest Hospitals to each Checkpoint**

### **Nationals Motorcycle Museum**

Birmingham Heartlands Hospital  
Bordesley Green East, Birmingham B9 5SS  
24 hours  
Tel: 0121 424 3263  
Approx. 15–25 minutes by car depending on traffic

### **The Viking café**

Hull Royal Infirmary  
Anlaby Road, Hull HU3 2JZ  
24 hours  
Tel: 01482 875875  
Approx. 20–30 minutes by car depending on traffic

### **Sutton Bank Visitors Centre**

James Cook University Hospital  
Marton Road, Middlesbrough TS4 3BW

24 hours

Tel: 01642 850850

Approx. 40–55 minutes by car depending on traffic

**Billy Bob's Parlor**

Airedale General Hospital

Skipton Road, Steeton, Keighley BD20 6TD

24 hours

Tel: 01535 652511

Approx. 20–30 minutes by car depending on traffic

**Matlock Bath**

Royal Derby Hospital

Uttoxeter New Road, Derby DE22 3NE

24 hours

Tel: 01332 340131

Approx. 35–50 minutes by car depending on traffic

**Rutland Water**

Peterborough City Hospital

Bretton Gate, Peterborough PE3 9GZ

24 hours

Tel: 01733 678000

Approx. 25–40 minutes by car depending on traffic